

How to Enter and Exit the Studio

We will continue to evaluate and adjust this policy as needed.



1.) ALL PERSONS ENTERING THE STUDIO THROUGH THE GARAGE

Parents dropping off will use the parking lot. The garage door will be open prior to the start of each class. The door will close when class begins. **Students will NOT be allowed into class if they are late!**

2.) ALL PERSONS WILL BE TEMP CHECKED

Temp checks will take place in the garage. Any persons with 100.4 or higher will be sent home. **Parents dropping off their child MUST remain near the studio for a "thumbs up" from their child, so they know their child will be allowed into the studio.**

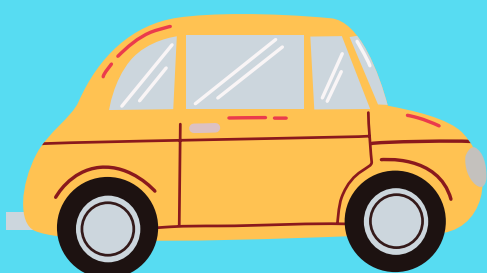
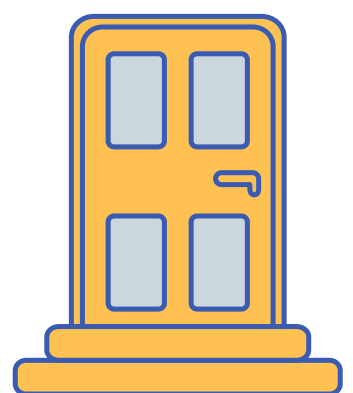


3.) HAND SANITIZER WILL BE APPLIED

Prior to entering the studio, all persons must apply hand sanitizer.

4.) ALL PERSONS WILL EXIT THROUGH THE FRONT DOOR

The front door will now be an EXIT ONLY door. All students will need to leave the studio promptly after their class. Some classes may be dismissed up to 5 min. early to allow them to leave the building prior to a new class entering.



5.) PICK UP STUDENTS ON BEDFORD AVE.

Students need to be picked up on Bedford Avenue. You may need to park, and walk up to escort your child back to your car. **Please DO NOT allow your child cross the street to get into your vehicle.**